

# Sablime<sup>®</sup> for Windows\* sfw1.2

## Installation and Upgrade Guide

### Overview

Sablime for Windows runs on Windows 2000 Professional or Server, Windows XP Pro, and on Windows Server\* 2003. Sablime for Windows runs in the Interix subsystem, also from Microsoft\*.

This guide has instructions for installing Interix and for installing Sablime itself. The Sablime installation process also installs an Apache\* Web Server into the Interix subsystem.

This guide is intended for both first-time installers of Sablime for Windows, and for those upgrading from earlier versions. Users upgrading from earlier versions of Sablime for Windows will not need to re-install Interix.

### Before you Begin

Sablime for Windows web clients must have a Java\* enabled browser. If your system does not come with a Java enabled browser, you can download the Java Runtime Environment (JRE) for Windows from <http://www.java.com>.

Note that the old JVM supplied by Microsoft for use with Internet Explorer is no longer updated or distributed by Microsoft, and is not sufficient for running Sablime.

### Upgrading

If you wish to upgrade to Sablime for Windows sfw1.2 from an earlier version of Sablime for Windows, follow the instructions in the [Installing Sablime](#) section below. You can skip the “Installing Interix” section.

Your existing license will continue to work.

### Installing Interix

The Interix subsystem is part of the Microsoft Windows Services for UNIX\* (SFU) package. This section guides you through the following steps of the SFU installation.

- Create working folder
  - Download SFU from Microsoft
  - Unpack SFU
  - Run the Setup Wizard
- 1) Create a new folder named INTERIX on the Windows desktop. We'll be using this folder for temporary storage - you can put it somewhere else if you like. You can remove the folder after the installation is completed.

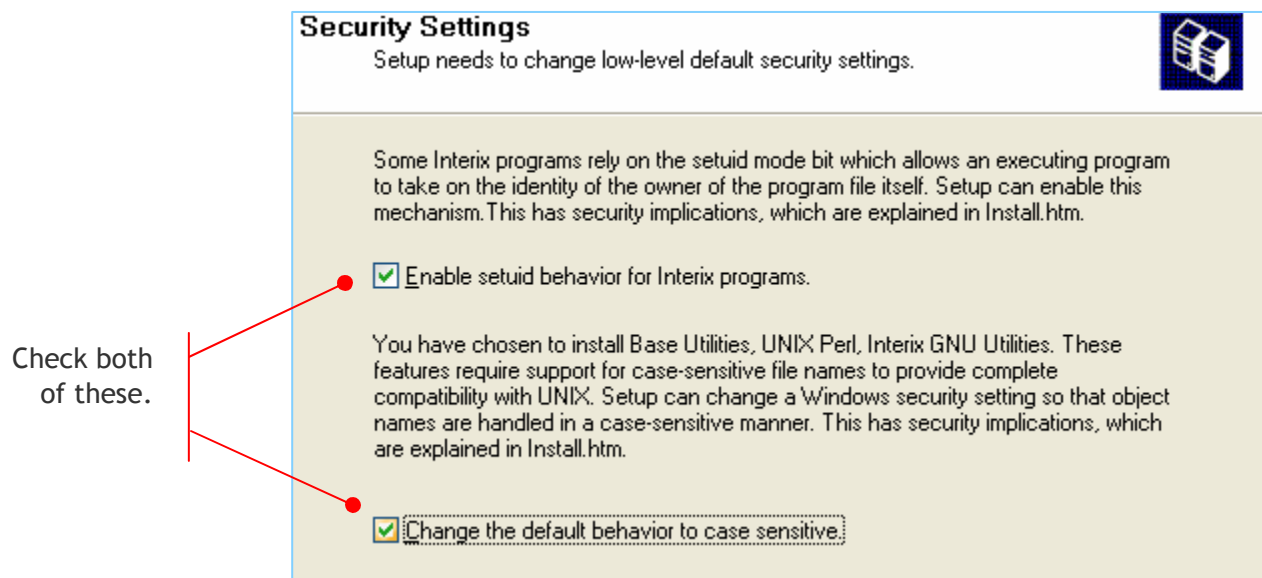
- 2) Download SFU 3.5 from Microsoft at <http://technet.microsoft.com/en-us/interopmigration/bb380242.aspx><sup>1</sup>.

Put the downloaded file into the INTERIX folder.

- 3) Unpack SFU by double-clicking on the file you downloaded. Use the Browse button on the resulting dialogue box to select the INTERIX folder you created, and then click “Unzip”.
- 4) When it finishes unpacking, open the INTERIX folder, and double-click on “SfuSetup”. This will launch the installation Wizard.

**Offline Installation:** You can install Sablime for Windows onto a machine without internet connectivity by copying the package downloaded in step 2 and the downloaded Sablime installer (SabInstaller.exe - see next section) to the machine. Each of these can be run while offline.

Use the Standard Installation, but check both “Enable setuid behavior for Interix programs” and “Change the default behavior to case sensitive”. These are necessary for proper Unix and Sablime behavior. The mentioned “security implications” of these are trivial unless you allow someone with villainous intentions to log into your Interix environment to do their mischief. If so, they have easier ways than these to do damage.



You can use the default values for other items such as “User Name Mapping”.

When the installation finishes, you can tell it to wait until later to restart the system.

## Installing Sablime

This section guides you through these steps for installing Sablime itself.

- Download Installer
  - Run Installer
  - Reboot system
- 1) Download the Sablime for Windows installation package <http://www.bell-labs.com/project/sablime/downloads/interix3.5/sfw1.2/SabInstaller.zip> onto the Windows Desktop. Uncompress the file using WinZip or equivalent.

<sup>1</sup> URL correct as of the time of this writing. Click on the “Windows Services for UNIX” in the “Download” box on the page-right. If Microsoft rearranges their pages again, search for “SFU” using their site search tool.

2) Double-click on the uncompressed file (SabInstaller.exe). This is an InstallShield\* executable, and it will guide you through the installation process.

2i) New Installations

Along the way, SabInstaller will create two local user accounts, "sbadm" and "mailnull", if these do not already exist. The "sbadm" (Sablime Administrator) account owns the Sablime application and data. The "mailnull" account is used by the Interix sendmail utility. For security reasons, it should remain disabled.

The installer will also install some other utilities that Sablime needs, such as the Apache Web Server, and the CSSC source control utilities<sup>i</sup>.

2u) Updates

If you already have Sablime for Windows installed, you may choose the "Update" option on SabInstaller.

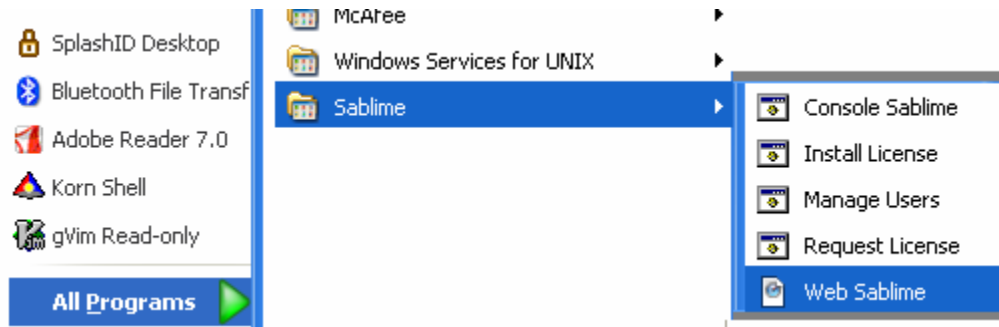
The installer will update your Sablime software and the utilities used by Sablime (as necessary).

Once the SabInstaller completes successfully, you may need to restart your system in order to use Sablime. This will depend on what exactly the installer needed to do (it will tell you whether you need to restart).

Verifying Installation

After the restart, Sablime should be ready to run using the sample database that comes pre-installed.

From your "Start" menu, select All Programs -> Sablime -> Web Sablime. It should launch your browser and request a Web Sablime login. Use "sbadm" as the account name and the password.



Note that this is *not* the Windows account password. This is strictly for Web access. Web passwords are inherently less secure, so you should not set the Web Access password to the same as the system password. Once logged in, you should go to the "Tools" menu and select Change Password to give "sbadm" a less obvious password.

To access Sablime from some other machine, use the URL [http://<host\\_machine\\_name\\_or\\_IP\\_address>:6060/docs/wsab.html](http://<host_machine_name_or_IP_address>:6060/docs/wsab.html).<sup>ii</sup>

You should be able to create MRs and to run some of the reporting functions. You will not be able to run other Sablime commands until you get an evaluation or regular license.

Instructions for getting the license and getting started with your Sablime instance are in the [Getting Started Guide](#).

**Technical Note:** The Web Server installed by this process will use TCP port 6060. In the unlikely event that you have some other TCP service using port 6060, you'll need to reconfigure one of them to use some other port. If you change the one serving Sablime, you'll also need to change the port number in the "All Programs" Web Sablime entry (right click on it, select Properties).

## Uninstalling Sablime for Windows

To uninstall Sablime for Windows, double-click on the SablInstaller and select the “Remove” option.

This will remove Sablime but will not remove the “sabadm” or “mailnull” Windows user accounts nor the Microsoft Windows Services for UNIX (SFU) and the Apache Web Server.

In addition, as an extra safety measure, your Sablime license and databases are NOT removed by the uninstaller. If you really wish to remove these, you can use the UNIX tools within Interix to remove them from /opt/sablime (i.e. “`rm -fr /opt/sablime`”).

If you also wish to uninstall SFU, open the “Add/Remove Programs” Control Panel, select “Microsoft Windows Services for UNIX” and click “Remove”.

If you are keeping SFU, but want to remove the Apache server that Sablime added, you can execute “`pkg_info`” from the Start -> Programs -> Windows Services for UNIX -> Korn Shell window, and then use “`pkg_delete`” to remove the Apache package(s).

The SFU uninstall may leave some files behind in C:\SFU, due to file ownership issues. To remove them, use the Windows Explorer to “take ownership” of the files and folders and to make them not “Read Only”, and then drag them to the trash (recycle) bin.

You can also remove the INTERIX folder we created during the installation.

- 
- \* Microsoft, Windows, Windows Live, and Windows Server are trademarks or registered trademarks of Microsoft Corporation in the U.S. and other countries.
  - \* Apache is a trademark of the Apache Software Foundation
  - \* Java is a trademark or registered trademark of Sun Microsystems, Inc. in the U.S. and other countries.
  - \* UNIX is a registered trademark of The Open Group.
  - \* InstallShield is a registered trademark of Macrovision Corporation in the United States of America and/or other countries.

i In addition to installing Sablime, this will install a pre-built version of the “CSSC” utilities, which Sablime can use during source management. These utilities are not part of Sablime itself. The original source for these is available from <http://cssc.sourceforge.net>. The source for our patch is at <ftp://www.bell-labs.com/pub/sablime/interix3.5/CSSCpatch.sh>.

Sablime is a registered trademark of Alcatel-Lucent. Contents copyright © 2008 Alcatel-Lucent. Permission to photocopy in support of a licensed installation of Sablime is hereby granted.